



Eifel Youth Programs

Goes Green for Summer 09



Coffee Mug Beautification

- The average person drinks roughly **4 cups of coffee a week** using a paper cup.
 - The average person wastes about **3 lbs** of one use paper cups a year.
 - Paper cups have a poly synthetic lining which prevents them from leaking. It also prevents them from dissolving when thrown away.

We decorated coffee mugs in order to promote using reusable and re-washable cups. It is more cost efficient and energy efficient even compared to the water and soap used to wash mugs.



WHAT DID WE LEARN??? USE CUPS YOU CAN WASH!!!!!!

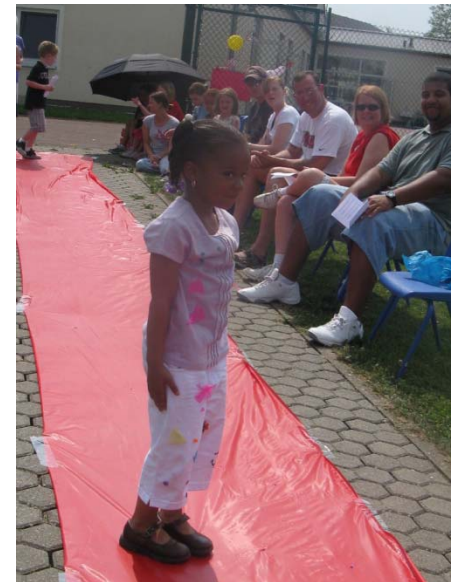


Recycled Fashion Show

- It takes a lot of energy to produce new clothes.
- It also takes a lot of pesticides to harvest materials like cotton.
 - Pesticides are harmful to our health and the environment.

We learned it is better to

1. switch clothes with your friends,
2. Redesign clothes you already have.
3. Shop at thrift stores



Clothes Swap



- The manufacture of polyester requires large amounts of crude oil which then releases emissions
- Cotton accounts for 1/4th of all pesticides used in the United States, the largest exporter of cotton in the world, according to the USDA.
- A great way to save money and energy is to switch old clothes with friends of yours. As long as they are in good condition, no one will know.



SAP Cleaners



- Many cleaners can cause risks to our health as well as the environment.
 - Some cleaners like simple green have actually been banned in countries like Germany.
- Making cleaning agents out of kitchen ingredients, will be safer for us and it will be safer for our environment.



Homemade dog biscuits

- There are roughly 27 million unwanted animals given to shelters in the U.S. every year.
- Over 10 million animals are put to death every year in the U.S. alone because they are abandoned and unwanted.

What did we learn? We can make cookies from ingredients already in our kitchen to help support shelters.





Recycle Paper

- The average office worker wastes $\frac{1}{2}$ LB of paper a day.
- $\frac{1}{2}$ LB wasted paper = 1 Lb Green house gas emissions
- **What we learned:** Find ways to conserve paper and if you have to use it, recycle when finished.

Trash Clean Up

- America is responsible for 33% of the world's waste.
- Recycling your plastic, paper, Cardboard, and bottles is necessary for our planet.

SO we learned that we need to Recycle and sometimes help Our earth by picking up other peoples trash.

